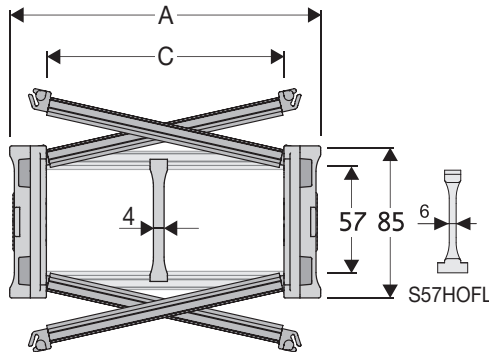


# Serie Heavy

## H57SC/H57LC Nylon cable chain with opening frames

### Inner height (D) 57 mm

Sideband construction with quickly removable pin. Frames openable from either side on both inner and outer radius. As standard the chain comes with frames every second link, on request with frames every link. Vertical and horizontal modular separator system is available. H57LC new version with Snap Pin.



### Separator

|               |                   |
|---------------|-------------------|
| - Unassembled | Part.no S57CF3    |
| - Assembled*  | Part.no S57CF3MCI |
| - Assembled** | Part.no S57CF3MCE |

### Strong-hold Separator

for C > 250 mm

|               |                 |
|---------------|-----------------|
| - Unassembled | Part.no S57HOFL |
| - Assembled   | Part.no S57HOFL |

### Pin

|        |                 |
|--------|-----------------|
| -H57SC | Part.no PNH57RS |
| -H57LC | Part.no PNH57S  |

\* for chain opening outer radius  
\*\* for chain opening inner radius

### Technical Characteristics when self-supporting

|              |                     |
|--------------|---------------------|
| Speed        | 8 m/s               |
| Acceleration | 40 m/s <sup>2</sup> |

For higher requirements please consult our technical dept.

4

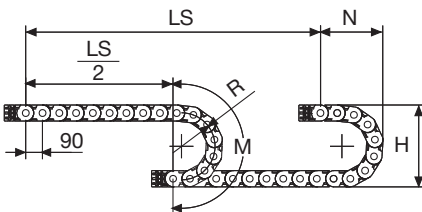
For sliding applications, characteristics techniques may vary depending on the frequency, added weight and work environment.

| A   | B  | C   | D  | R                           | Weight/m | Chain              |
|-----|----|-----|----|-----------------------------|----------|--------------------|
| mm  | mm | mm  | mm | mm                          | kg       | Part Number        |
| 113 | 85 | 75  | 57 | 150-180-200-250-300-350-400 | 3,03     | H57( )*C075 □□□ ** |
| 138 | 85 | 100 | 57 | 150-180-200-250-300-350-400 | 3,09     | H57( )*C100 □□□ ** |
| 163 | 85 | 125 | 57 | 150-180-200-250-300-350-400 | 3,16     | H57( )*C125 □□□ ** |
| 188 | 85 | 150 | 57 | 150-180-200-250-300-350-400 | 3,22     | H57( )*C150 □□□ ** |
| 213 | 85 | 175 | 57 | 150-180-200-250-300-350-400 | 3,29     | H57( )*C175 □□□ ** |
| 238 | 85 | 200 | 57 | 150-180-200-250-300-350-400 | 3,35     | H57( )*C200 □□□ ** |
| 263 | 85 | 225 | 57 | 150-180-200-250-300-350-400 | 3,42     | H57( )*C225 □□□ ** |
| 288 | 85 | 250 | 57 | 150-180-200-250-300-350-400 | 3,48     | H57( )*C250 □□□ ** |
| 313 | 85 | 275 | 57 | 150-180-200-250-300-350-400 | 3,55     | H57( )*C275 □□□ ** |
| 338 | 85 | 300 | 57 | 150-180-200-250-300-350-400 | 3,61     | H57( )*C300 □□□ ** |
| 388 | 85 | 350 | 57 | 150-180-200-250-300-350-400 | 3,74     | H57( )*C350 □□□ ** |
| 438 | 85 | 400 | 57 | 150-180-200-250-300-350-400 | 3,88     | H57( )*C400 □□□ ** |

\* Complete with the version of the chain Ex. H57(S/L)C

\*\*Complete the code by inserting the value of the radius (R): Ex. H57SC100 □ □ □ □

Chain equipped with nylon frame every pitch: complete the code by inserting the letter D. Ex. H57SC100250 □

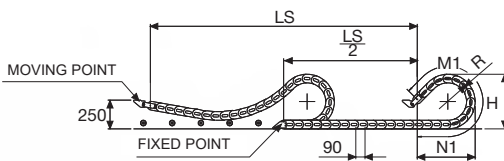


Length of chain (L)

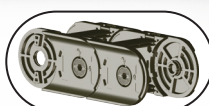
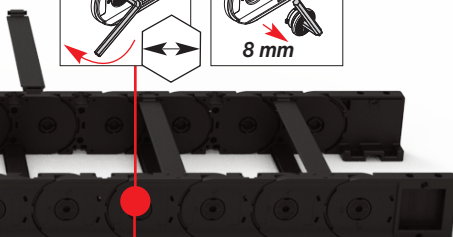
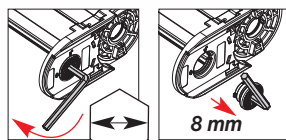
Half travel distance ( $\frac{LS}{2}$ )

plus length of curve (M) or (M1)

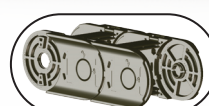
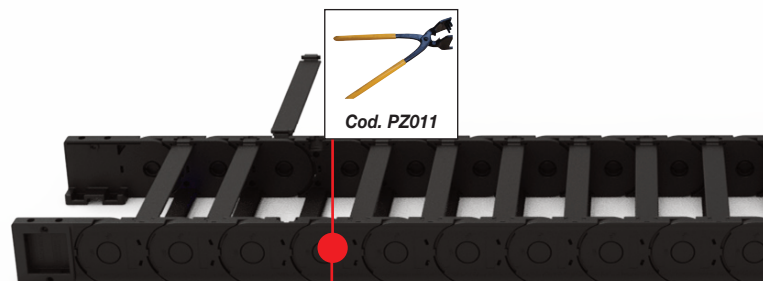
$$L = \frac{LS}{2} + M \text{ or } M1$$



| R   | H   | N   | M    | N1   | M1   |
|-----|-----|-----|------|------|------|
| mm  | mm  | mm  | mm   | mm   | mm   |
| 150 | 385 | 283 | 655  | 565  | 1235 |
| 180 | 445 | 313 | 750  | 705  | 1570 |
| 200 | 485 | 333 | 810  | 805  | 1795 |
| 250 | 585 | 383 | 970  | 1040 | 2350 |
| 300 | 685 | 433 | 1125 | 1275 | 2905 |
| 350 | 785 | 483 | 1280 | 1510 | 3460 |
| 400 | 885 | 533 | 1440 | 1750 | 4020 |



H57SC:  
Allen key pin opening

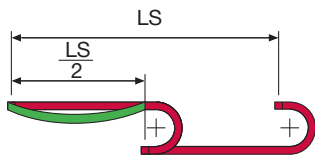
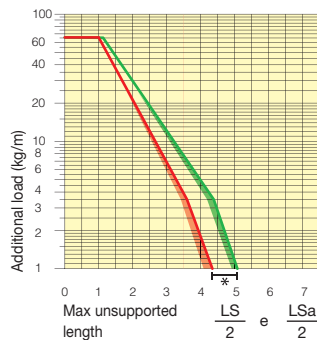


H57LC:  
Pin opening with special tool



### Self-Supporting Capacity Diagram

The maximum length of the self-supporting capacity or in admissible sagging  $\frac{LS}{2}$  in relationship to the weight of the cables and hoses contained per linear metre.



**\*If the chain is in the ADMISSIBLE SAGGING area (between GREEN and RED area) version with frames on every link is necessary.**

The area in the diagram considers the difference of weight between various widths of chain with nylon frame every second link.

Red for self-supporting chain, green for chain in admissible sagging.

For applications with  $(\frac{LS}{2})$  and weights not included in the diagram of self-supporting capacity, verify the possible use of support rollers (see page 30).

### End Brackets

The end brackets set allows the two ends of the chain to be attached to the equipment. Set complete with tiewrap clamps available on request.

#### Nylon Type

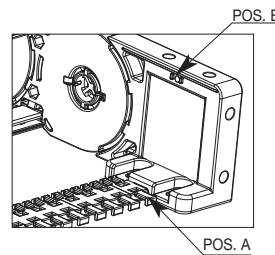
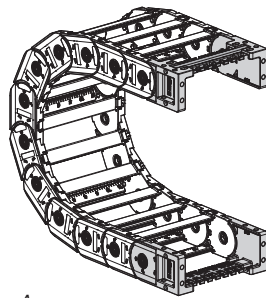
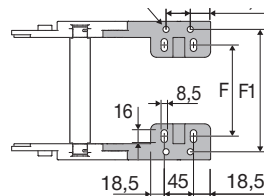
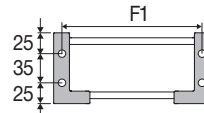
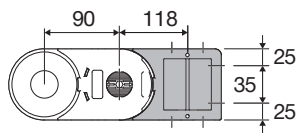


Fig. A  
The chain can be fixed frontally, inner and outer radius (Fig A)



| Chain Type   | F mm |
|--------------|------|
| H57(S/L)C075 | 51   |
| H57(S/L)C100 | 76   |
| H57(S/L)C125 | 101  |
| H57(S/L)C150 | 126  |
| H57(S/L)C175 | 151  |
| H57(S/L)C200 | 176  |
| H57(S/L)C225 | 201  |
| H57(S/L)C250 | 226  |
| H57(S/L)C275 | 251  |
| H57(S/L)C300 | 276  |
| H57(S/L)C350 | 326  |
| H57(S/L)C400 | 376  |

#### Nylon Type Part Numbers

| Chain Type | Complete Set Assembled End Brackets set |
|------------|---|
| H57SC      | ANH57KM□**                              |
| H57LC      | ANH57LKM□**                             |

| Chain Type | Complete Set Unassembled End Brackets set |
|------------|---|
| H57SC      | ANH57K                                    |
| H57LC      | ANH57L                                    |

\*\* 1=Pos.1; 2=Pos.2; 3=Pos.3

| Chain Type   | F1 mm |
|--------------|-------|
| H57(S/L)C075 | 98    |
| H57(S/L)C100 | 123   |
| H57(S/L)C125 | 148   |
| H57(S/L)C150 | 173   |
| H57(S/L)C175 | 198   |
| H57(S/L)C200 | 223   |
| H57(S/L)C225 | 248   |
| H57(S/L)C250 | 273   |
| H57(S/L)C275 | 298   |
| H57(S/L)C300 | 323   |
| H57(S/L)C350 | 373   |
| H57(S/L)C400 | 423   |

#### Tiewrap Clamp

| Chain Type | Complete Set Assembled Tiewrap Clamp set |
|------------|--|
| Pos. A     | SFCTH57□□□*KMA                           |
| Pos. B     | SFCTH57□□□*KM                            |

| Chain Type | Complete Set Unassembled Mounting Tiewrap Clamp set |
|------------|---|
| Pos. A     | SFCTH57□□□*KA                                       |
| Pos. B     | SFCTH57□□□*K  |

\* Inner Width C

### Serie Heavy

## H57SC/ H57LC

Nylon cable chain with opening frames



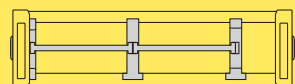
#### H57B - H57LB

On request can be supplied with rods made of stainless steel or bright zinc plated steel.



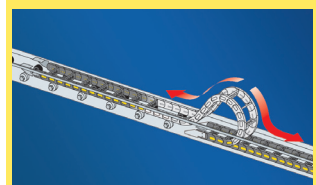
#### H57T - H57LT

On request can be supplied with drawn made of stainless steel or bright zinc plated steel.



Separation System page. 216

#### How to open the frame



Suitable to long travel distance with covers on all the pitches. See page 182

For further informations please consult Brevetti Stendaito's Technical Office