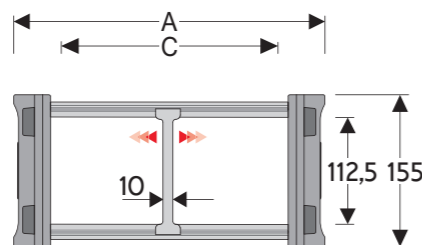


H110T

Nylon chain with aluminium draw plates

Inner height (D) 112,5 mm

Sideband construction with quickly removable pin.
Alu-draw frames are un-screwable from inner and outer radius.
As standard the chain comes with frames every link.
Vertical separators system available.



Separator	
- Unassembled	Part.no S310TCF9
- Assembled	Part.no S310TCF9MC
Pin	
	Part.no PNH110RS

Technical characteristics when self-supported

Speed	4 m/s
Acceleration	20 m/s ²

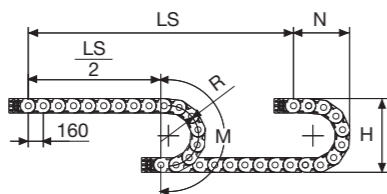
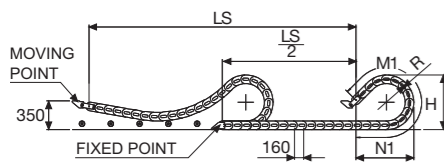
For higher requirements please consult our technical dept.

For sliding applications, characteristics techniques may vary depending on the frequency, added weight and work environment.

A	B	C	D	R	Weight/m	Chain
mm	mm	mm	mm	mm	kg	Part Number
255	155	200	112,5	200-250-300-400-500-600-700-750	10,21	110T200 □□□ *
355	155	300	112,5	200-250-300-400-500-600-700-750	11,25	110T300 □□□ *
455	155	400	112,5	200-250-300-400-500-600-700-750	12,29	110T400 □□□ *
555	155	500	112,5	200-250-300-400-500-600-700-750	13,33	110T500 □□□ *
655	155	600	112,5	200-250-300-400-500-600-700-750	14,36	110T600 □□□ *
C+55	155	...	112,5	200-250-300-400-500-600-700-750		110T □□□□□ **

*Complete the code by inserting the value of the radius (R): Ex. 110T200 □□□□

**Complete the code by inserting the value of the quote C and the radius (R): Ex. 110T□□□□□□□□



Length of chain (L)

Half travel distance ($\frac{LS}{2}$)

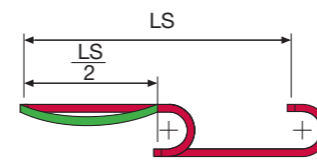
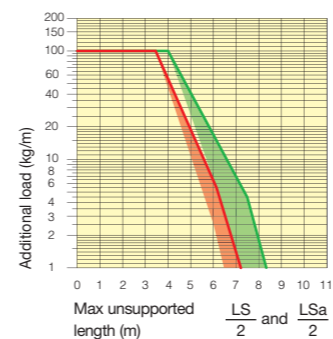
plus length of curve (M) or (M1)

$$L = \frac{LS}{2} + M \text{ or } M1$$

R	H	N	M	N1	M1
mm	mm	mm	mm	mm	mm
200	557	418	950	855	1820
250	657	468	1110	1095	2375
300	757	518	1265	1335	2935
400	957	618	1580	1805	4045
500	1157	718	1895	2280	5160
600	1357	818	2205	2750	6270
700	1557	918	2520	3225	7385
750	1657	968	2680	3460	7940

Self-Supporting Capacity Diagram

The maximum length of the self-supporting capacity or in admissible sagging ($\frac{LS}{2}$) in relationship to the weight of the cables and hoses contained per linear metre.



Bright Zinc Plated Steel End Bracket***

The end brackets set allows the two ends of the chain to be attached to the equipment. Set complete with tiwrap clamps available on request.

Bright Zinc Plated Steel Type

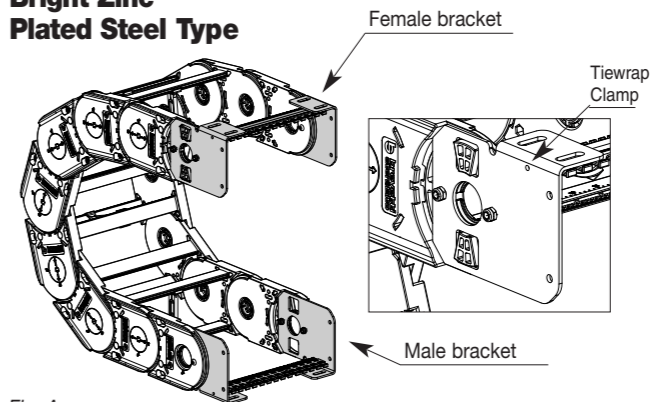
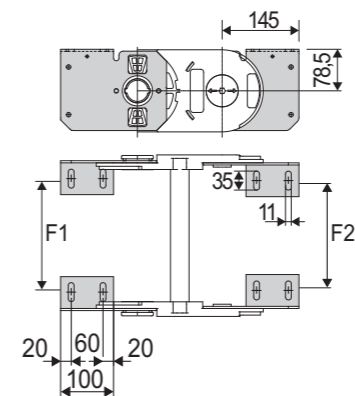


Fig. A Chain fixed outside/inside the radius. (Fig A) See mounting options page 31



Chain Type	F1 mm
110T200	170
110T300	270
110T400	370
110T500	470
110T600	570
Special widths	F=C-30

Catena Tipo	F2 mm
110T200	162
110T300	262
110T400	362
110T500	462
110T600	562
Special widths	F=C-38

Bright Zinc Plated Steel Type Part Number

Complete Set assembled	End Brackets
Chain Type	Set
110T...	A110KM □ **

Complete Set Unassembled	End Brackets
Chain Type	Set
110T...	A110T □□□ K □ **

** 1= Pos.1; 2= Pos.2; 3= Pos.3
*** On request stainless steel

Tiewrap Clamp kit mounted on female attachment

Part Number	
Assembled	SFCT110 □□□ *FKM
Unassembled	SFCT110 □□□ *FK
* Inner width (C)	

Tiewrap Clamp kit mounted on male attachment

Part Number	
Assembled	SFCT110 □□□ *MKM
Unassembled	SFCT110 □□□ *MK
* Inner width (C)	

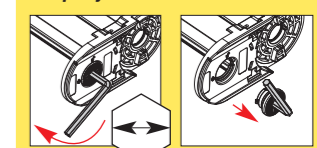
H110T

Nylon chain with aluminium draw plates

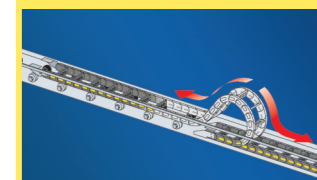


H110B
On request can be supplied with rods made of stainless steel or bright zinc plated steel.

How to release the pin junction



CH.10 mm



Suitable to long travel distance with covers on all the pitches. See page 184

For further informations please consult Brevetti Stendalto's Technical Office



Version with Alu-draw mounted on every pitch