

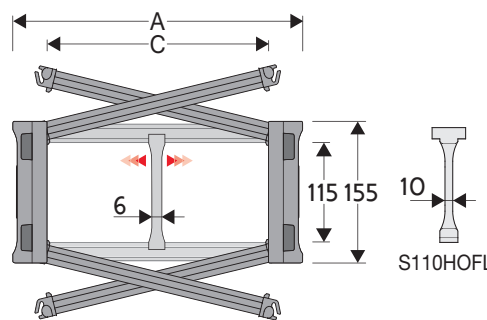
Serie Heavy

H110SC

Nylon Chain with opening frame with a snap

Inner height (D) 115 mm

Sideband construction with quickly removable pin. Frames openable from either side on both inner and outer radius. As standard the chain comes with frames every link. Vertical and horizontal modular separator system is available.



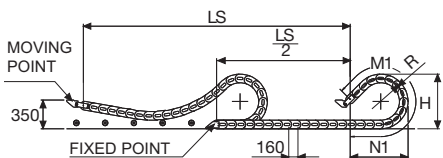
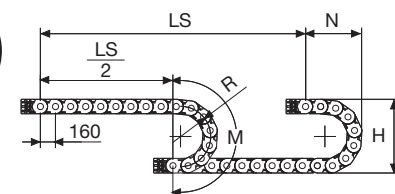
Separator	
- Unassembled	Part.no S110F3
- Assembled*	Part.no S110F3MCI
- Assembled**	Part.no S110F3MCE
Strong - Hold Separator for C > 250 mm	
- Unassembled	Part.no S110HOFL
- Assembled	Part.no S110HOFLMC
Pin	
	Part.no PNH110RS

* for chain opening outer radius
** for chain opening inner radius

Technical characteristics when self-supported

Speed	8 m/s
Acceleration	40 m/s ²

For higher requirements please consult our technical dept.



For sliding applications, characteristics techniques may vary depending on the frequency, added weight and work environment.

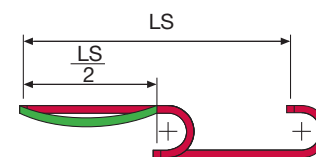
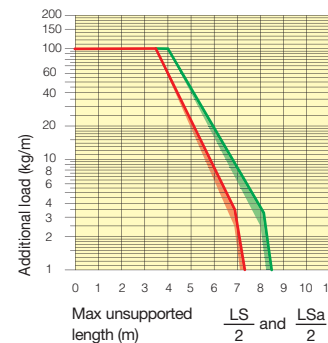
R	H	N	M	N1	M1
mm	mm	mm	mm	mm	mm
200	557	418	950	855	1820
250	657	468	1110	1095	2375
300	757	518	1265	1335	2935
400	957	618	1580	1805	4045
500	1157	718	1895	2280	5160
600	1357	818	2205	2750	6270
700	1557	918	2520	3225	7385
750	1657	968	2680	3460	7940

A	B	C	D	R	Weight/m	Chain
mm	mm	mm	mm	mm	kg	Part Number
205	155	150	115	200-250-300-400-500-600-700-750	8,66	110SC150 □□□*
230	155	175	115	200-250-300-400-500-600-700-750	8,79	110SC175 □□□*
255	155	200	115	200-250-300-400-500-600-700-750	8,91	110SC200 □□□*
280	155	225	115	200-250-300-400-500-600-700-750	9,03	110SC225 □□□*
305	155	250	115	200-250-300-400-500-600-700-750	9,16	110SC250 □□□*
330	155	275	115	200-250-300-400-500-600-700-750	9,27	110SC275 □□□*
355	155	300	115	200-250-300-400-500-600-700-750	9,38	110SC300 □□□*
380	155	325	115	200-250-300-400-500-600-700-750	9,53	110SC325 □□□*
405	155	350	115	200-250-300-400-500-600-700-750	9,70	110SC350 □□□*
430	155	375	115	200-250-300-400-500-600-700-750	9,80	110SC375 □□□*
485	155	430	115	200-250-300-400-500-600-700-750	10,10	110SC430 □□□*
555	155	500	115	200-250-300-400-500-600-700-750	10,48	110SC500 □□□*

*Complete the code by inserting the value of the radius (R): Ex. 110SC350 □□□□

Self-Supporting Capacity Diagram

The maximum length of the self-supporting capacity or in admissible sagging ($-\frac{LS}{2}$) in relationship to the weight of the cables and hoses contained per linear metre.



Bright Zinc Plated Steel End Brackets

The end brackets set allows the two ends of the chain to be attached to the equipment. Set complete with tiewrap clamps available on request.

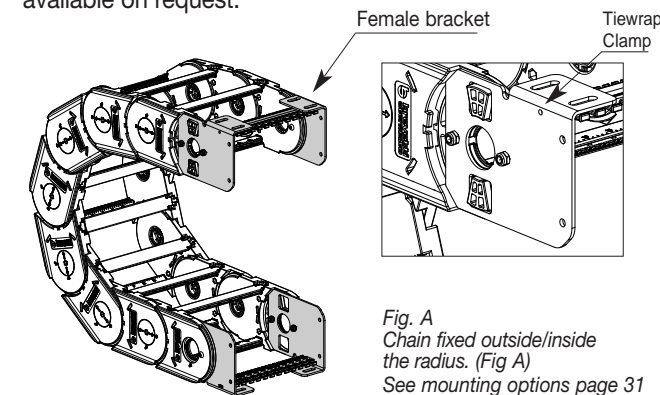
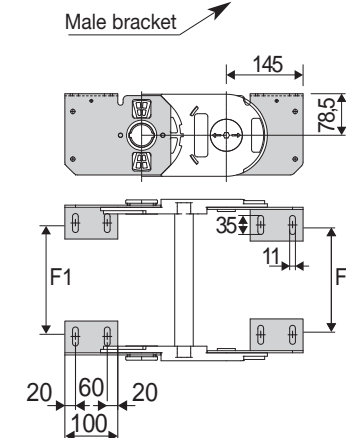


Fig. A
Chain fixed outside/inside the radius. (Fig A)
See mounting options page 31



Chain Type	F1 mm
110SC150	120
110SC175	145
110SC200	170
110SC225	195
110SC250	220
110SC275	245
110SC300	270
110SC325	295
110SC350	320
110SC375	344
110SC430	400
110SC500	470
Special widths	F= C-85

Chain Type	F2 mm
110SC150	112
110SC175	137
110SC200	162
110SC225	187
110SC250	212
110SC275	237
110SC300	262
110SC325	287
110SC350	312
110SC375	336
110SC430	392
110SC500	462
Special widths	F= C-93

Bright Zinc Plated Steel Type Part Number

Complete Set Assembled Chain type	End Brackets kit
110SC	A110KM □□*

Complete Set Unassembled Chain type	End Brackets kit
110SC	A110S □□□ K □□*

Available on request in stainless steel.
** 1=Pos.1; 2=Pos.2; 3=Pos.3
See mounting variations page 31

Tiewrap Clamp kit mounted on female attachment

Part Number	
Assembled	SFCT110 □□□ *FKM
Unassembled	SFCT110 □□□ *FK

* Inner width (C)

Tiewrap Clamp kit mounted on male attachment

Part Number	
Assembled	SFCT110 □□□ *MKM
Unassembled	SFCT110 □□□ *MK

* Inner width (C)

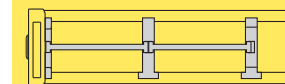
Serie Heavy

H110SC

Nylon chain with opening frame with a snap



H110B
On request can be supplied with rods made of stainless steel or bright zinc plated steel.

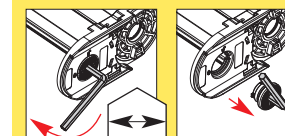


Separation System page. 216

How to open the frame



How to release the pin junction



10 mm



Suitable to long travel distance with covers on all the pitches. See page 184

For further informations please consult Brevetti Stendalto's Technical Office



Version with nylonframes mounted on every pitch