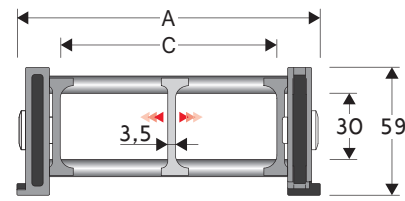


326B Nylon Sliding Cable Chain with un-screwable aluminium rods

Inner height (D) 30 mm

Strong double share Sideband & Frame construction with large anti-friction triple-pin. The chain incorporates large sliding-skid surfaces to offer durability, even with high speed/loads. The Alu-rod frames are un-screwable from inner and outer radius. As standard the chain comes with frames every second link, on request with frames every link. Separator systems are available.



| Separator | |
|---------------|------------------|
| - Unassembled | Part.no S2000F |
| - Assembled | Part.no S2000FMC |
| Pin | |
| | Part.no PG307 |

Technical characteristics

| | |
|--------------|--------------------|
| Speed | 2 m/s |
| Acceleration | 4 m/s ² |

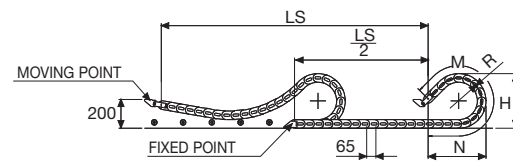
For higher requirements please consult our technical dept.

| A | B | C | D | R | Weight/m | Chain |
|------|----|-------|----|---------------------|----------|---------------|
| mm | mm | mm | mm | mm | kg | Part Number |
| 115 | 59 | 75 | 30 | 107-150-200-250-300 | 1,75 | 326B075 □□□ * |
| 140 | 59 | 100 | 30 | 107-150-200-250-300 | 1,80 | 326B100 □□□ * |
| 190 | 59 | 150 | 30 | 107-150-200-250-300 | 1,90 | 326B150 □□□ * |
| 240 | 59 | 200 | 30 | 107-150-200-250-300 | 2,05 | 326B200 □□□ * |
| 290 | 59 | 250 | 30 | 107-150-200-250-300 | 2,15 | 326B250 □□□ * |
| 340 | 59 | 300 | 30 | 107-150-200-250-300 | 2,25 | 326B300 □□□ * |
| C+40 | 59 | | 30 | 107-150-200-250-300 | | 326B □□□□□ ** |

*Complete the code by inserting the value of the radius (R): Ex. 326B100 □ □ □ □

**Complete the code by inserting the value of the quote C and the radius (R): Ex. 326B □ □ □ □ □ □ □ □

Chain equipped with aluminium rods every pitch: complete the code by inserting the letter D.
Ex. 326B100150 □ □ □ □ □ □ □ □



| R | H | N | M |
|-----|-----|-----|------|
| mm | mm | mm | mm |
| 107 | 272 | 280 | 625 |
| 150 | 358 | 430 | 1000 |
| 200 | 458 | 605 | 1440 |
| 250 | 558 | 775 | 1875 |
| 300 | 658 | 945 | 2315 |

Length of chain (L)

Half travel distance ($\frac{LS}{2}$)

plus length of curve (M)

$$L = \frac{LS}{2} + M$$



Version with Alu-rods on every second pitch.

End Brackets

The end brackets set allows the two ends of the chain to be attached to the equipment. One set includes two pivoting end brackets to be installed at the moving point and two standard steel end brackets to be installed at the fixed point.

Bright Zinc Plated Steel Movable Type* (moving point)**

Bright Zinc Plated Steel Type* (fixed point)**

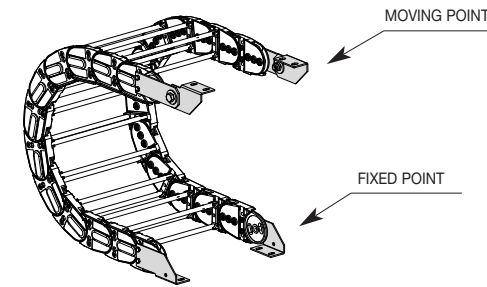
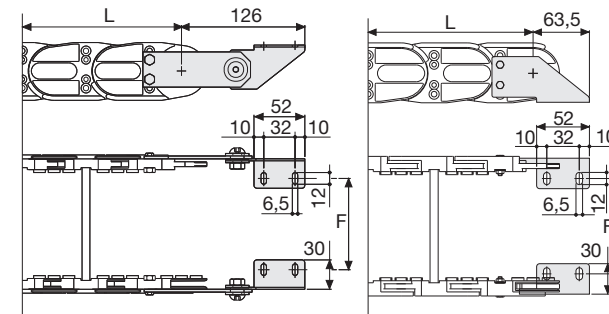


Fig. A
Chain fixed outside the radius. (Fig A)



| Chain Type | F mm |
|-----------------------|------|
| 326B075 | 67 |
| 326B100 | 92 |
| 326B150 | 142 |
| 326B200 | 192 |
| 326B250 | 242 |
| 326B300 | 292 |
| Special widths F=A-48 | |

| Chain Type | F1 mm |
|-----------------------|-------|
| 326B075 | 71 |
| 326B100 | 96 |
| 326B150 | 146 |
| 326B200 | 196 |
| 326B250 | 246 |
| 326B300 | 296 |
| Special widths F=A-44 | |

Bright Zinc Plated Steel Type Part Numbers

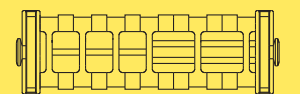
| Complete Set Assembled Chain Type | End Brackets Set |
|-----------------------------------|------------------|
| 326B... | A326KM□** |

| Complete Set Unassembled Chain Type | End Brackets Set |
|-------------------------------------|------------------|
| 326B... | A326K□** |

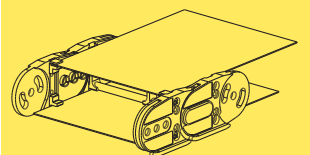
** 1=Pos.1; 2=Pos.2; 3=Pos.3;

*** Available on request in stainless steel

326B Nylon Sliding Cable Chain with un-screwable aluminium rods



Supplementary movable separators.



Steel laminar cover.

Special tool to remove the connecting pivots:
Part Number PZ036.



For further information please consult Brevetti Stendalto's Technical Office